

# GARDEN VIEW

## *Vinyl Windows*



### Features:

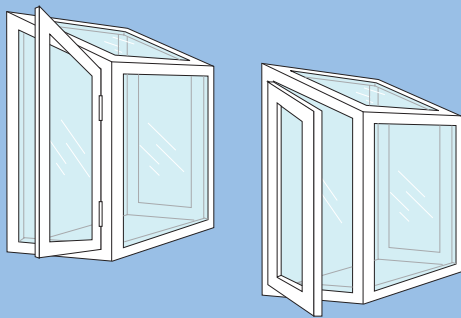
- Attractive, clean line design for a 'straight through' view to the outside.
- Dual compression seals for air and water tightness.
- 30° roof angle for greater range of size availability and proper water drainage.
- Aluminum reinforced frame for lasting durability.
- High quality hardware and screens standard.
- Seat is 1 $\frac{1}{4}$ " furniture quality birch or oak, with vinyl laminated backer, ready for stain or paint.
- Energy efficient Low-E glass and other glazing available.

***Kaufmann***<sup>®</sup>  
**Window & Door**

Custom-built quality window and door products  
Since 1937

Choose a style to compliment your home.

Casements can be hinged to open toward or away from the house.



Edgetech Super Spacer™ is standard with every Kaufmann Comfort Tite™ Vinyl Window.

**Edgetech** Super Spacer — a silicone foam spacer that provides the warmest edged glass in the industry. Warm edged glass is the major factor in controlling annoying moisture condensation.



Comfort Tite™ Vinyl

- Available in solid white or almond.
- White

Almond
- Never needs painting, stain or varnish.
  - A lifetime guarantee against rotting, peeling, blistering, corrosion and rust.
  - Self-lubricating sash tracks resist binding and provide long-term ease of operation.

Choose an exterior color to compliment your décor, with high performance heat reflective uPVC coatings.

- A well tested and field proven PVC window coating system that is heat resistant and holds up to the elements.
- Color is guaranteed for 10 years against measurable fading.
- Standard colors include: Almond, Aztec Clay, Black, Chestnut Brown, Cranberry Red, Earthbrown, Forest Green, Savannah Wicker, Statuary Bronze and Storm Gray. Custom color matching is available.



(Actual color may not match illustrations)

Kaufmann Comfort Tite™ is a registered trademark of Kaufmann Window & Door.

## Garden View Series CA1800

The Garden View Vinyl Window is specially designed to combine the aesthetic appeal of clean lines with a refined structural design that assures lasting durability.

- Glass area is maximized with this unique design.
- Frame and casements are aligned inside for a 'straight through' view to the outside.
- End casements are easily opened for ventilation, and full screens are standard.
- The 30° roof angle ensures water runoff.
- Full width wire shelf is standard. End wire shelves are a no cost option. Full width glass shelf is available at a modest premium.
- Dual compression seal on the operable casements provide air and water tightness.
- Weep channels at both the top and bottom of the Garden View window keep the interior dry.

Dual compression seals for air and water tightness

Energy efficient Low-E glass and other glazing options available

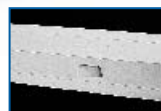
Reinforced frame for maximum strength



High quality hardware and screens standard



Frame and casements are aligned inside for a 'straight through' view to the outside



Weep channels for water drainage

Seat is 1 1/4" birch or oak, with vinyl laminated backer, which can be stained or painted

Custom built for your home.

Represented by:



Kaufmann Window and Door • 12891 Mt. Elliott • Detroit, MI 48212 • (313) 893-9500

Visit us at [kaufmannwindow.com](http://kaufmannwindow.com)